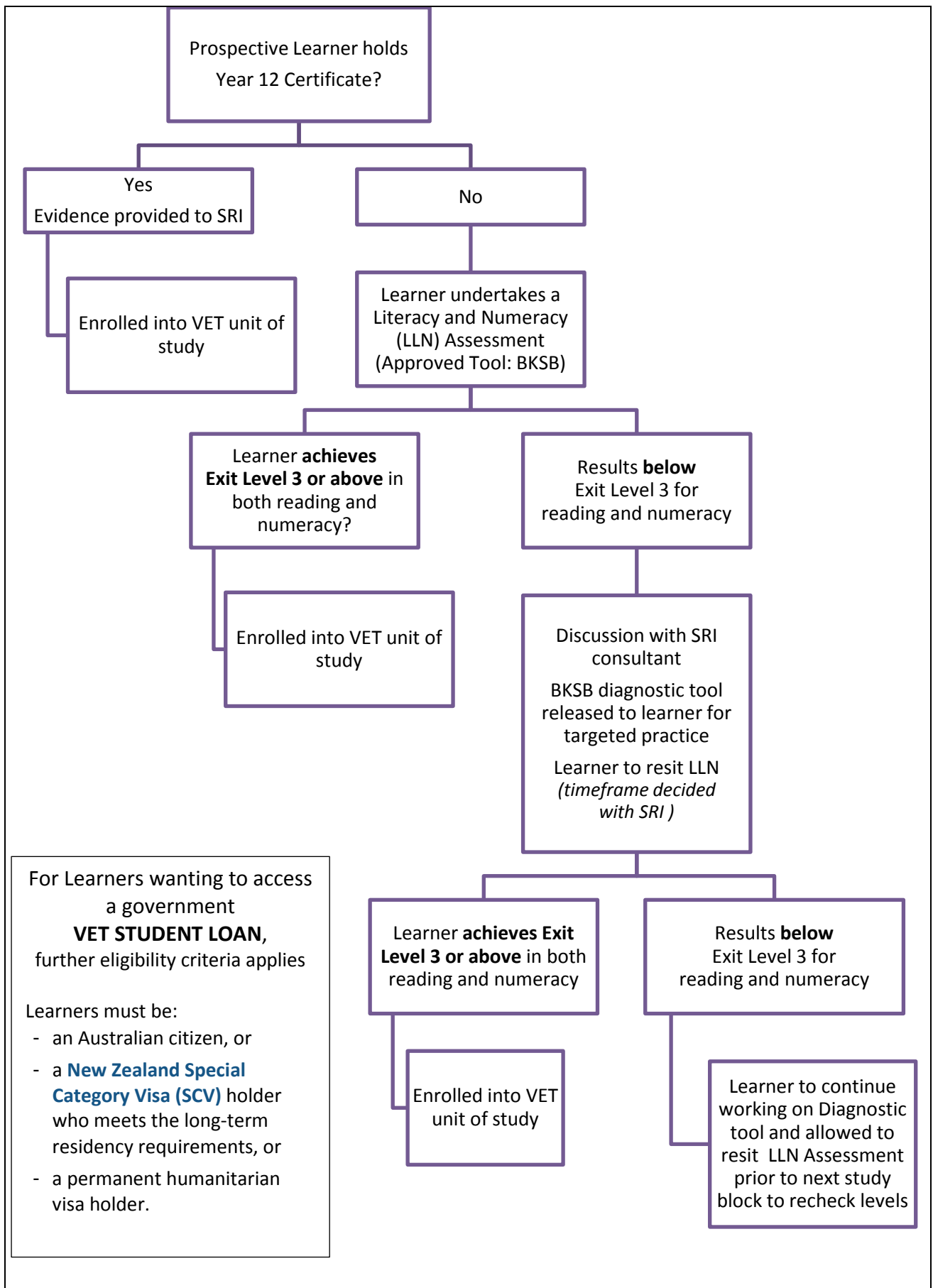


Procedure
Entry Requirements for Diploma Courses



DESCRIPTION	The following entry procedure for Sarina Russo Institute(SRI) Diplomas will be followed to ensure the prospective learner holds a Year 12 Certificate or undertakes an approved literacy and numeracy assessment and achieves competency at or above exit level 3 in the Australian Core Skills Framework for reading and numeracy, as per VET FEE-HELP/VET STUDENT LOAN Guidelines and SRI entry requirements
KPI SUMMARY	<ul style="list-style-type: none">• For VET STUDENT LOAN students: Providers will be required to assess the capacity of each student to complete a training course before enrolment and before the offer of a VET STUDENT LOAN. For students undertaking higher level VET qualifications, it is expected these minimum requirements will include completing Year 12 or equivalent proof of competency in core skills to a level appropriate for the course in which the student is seeking to enrol (as set out in the Higher Education Support (VET Guideline) 2015)• For FEE FOR SERVICE students: the above will apply as per SRI’s Training and Assessment Strategy (TAS) entry requirements• RTO’s will publish an <i>Entry Requirements Procedure</i> (including on their websites) that sets out the requirements that a person must meet to be eligible to enrol in each VET course of study.
OVERVIEW	See over page.



For Learners wanting to access a government **VET STUDENT LOAN**, further eligibility criteria applies

Learners must be:

- an Australian citizen, or
- a **New Zealand Special Category Visa (SCV)** holder who meets the long-term residency requirements, or
- a permanent humanitarian visa holder.

Procedure
Entry Requirements for Diploma Courses



EXTRA INFORMATION	
RELATED DOCUMENTS	<i>Higher Education Support (VET) Guideline 2015 sub-paragraph 38(1)(c)</i>
RELATED PROCEDURES	VET STUDENT LOAN enrolment procedure